

GEOLOGY

10113

EXAMPLE EXAM 1 QUESTIONS
MAKE SURE YOU UNDERSTAND WHY THE
RIGHT ANSWER IS RIGHT!

1

ATOM WITH 10 PROTONS HAS HOW MANY
NEUTRONS?

1. 9
2. 10
3. 11
4. **1, 2 or 3**
5. Not knowable

2

WHICH MAGMA WILL BE LEAST VISCOUS?

1. **a very hot magma**
2. a very gassy magma
3. a silica rich magma
4. a felsic magma

3

WHICH ELEMENTS ARE MOST COMMON IN SILICATE
MINERALS?

1. silicon and iron
2. silicon and sodium
3. silicon and magnesium
4. **silicon and oxygen**
5. silicon and calcium

4

WHICH OF THE FOLLOWING MINERALS IS RICHEST IN IRON?

1. feldspar
2. muscovite
3. **olivine**
4. pyroxene
5. quartz

5

A MAGMA COOLS UNDERGROUND FOR 10,000 YEARS. IT'S CRYSTALS WILL BE...

1. **larger**
2. smaller
3. darker
4. lighter
5. greener

6

A _____ IS A CONCORDANT TABULAR BODY.

1. laccolith
2. batholith
3. **sill**
4. dike
5. harpolith

7

_____ IS THE MOST ABUNDANT GAS IN A VOLCANIC ERUPTION.

1. oxygen
2. carbon dioxide
3. nitrogen
4. **water vapor**
5. sulfur dioxide

8

WHICH IS FORMED BY CHEMICAL WEATHERING?

1. gravel
2. sand
3. silt
4. **clay**
5. unknown

9

BOWENS REACTION SERIES DOESN'T EXPLAIN...?

1. temperature at which minerals form
2. **crystal size of minerals**
3. chemical weathering stability
4. 1 and 3 above

10

MOST OF THE SOILS IN TEXAS ARE....?

1. laterites
2. texocals
3. **pedocals**
4. pedalfers
5. paleosols

11

I FOUND A SEDIMENTARY ROCK IN WHICH THE PARTICLES ARE 1 MM IN DIAMETER. WHAT KIND OF ROCK IS THIS?

1. shale
2. mudstone
3. siltstone
4. **sandstone**
5. conglomerate

12

FROST WEDGING IS MOST EFFECTIVE IN...

1. Cairo
2. Anchorage
3. Mexico City
4. **Chicago**
5. Houston

13

WHICH MINERALS ARE MOST COMMON IN DETRITAL SEDIMENTARY ROCKS?

1. quartz and calcium
2. calcite and clay
3. halite and feldspar
4. **clay and quartz**
5. gypsum and halite

14

THE CHEMICAL WEATHERING OF FELDSPAR INTO CLAY IS...

1. ionosis
2. oxidation
3. dissolution
4. ionization
5. **hydrolysis**

15

THIS ROCK IS....

1. mafic
2. **felsic**
3. metamorphic
4. sedimentary



16

IF A ROCK STARTS TO MELT DURING METAMORPHOSIS IT BECOMES....

1. slate
2. phyllite
3. schist
4. gneiss
5. **magma**

17

IN A CROSS SECTION I SEE A STRATUM OF CONGLOMERATE. IT WAS MOST LIKELY DEPOSITED....

1. **near a source.**
2. far from a source.
3. in the middle of an ancient sea.
4. in the middle of an ancient lake.

18

CHEMICAL SEDIMENTARY ROCKS ARE CLASSIFIED ON THE BASIS OF...

1. color
2. particle size
3. type of bedding
4. **mineral composition**
5. none of the above

19

THE LEAST AMOUNT OF METAMORPHIC ROCK IS GENERATED IN....

1. **fault zone metamorphism**
2. contact metamorphism
3. regional metamorphism
4. all above are equal
5. no way to tell

20

A NON-FOLIATED METAMORPHIC ROCK MADE OF UP OF CALCITE CRYSTALS IS...

1. schist
2. quartzite
3. gneiss
4. granite
5. **marble**

21

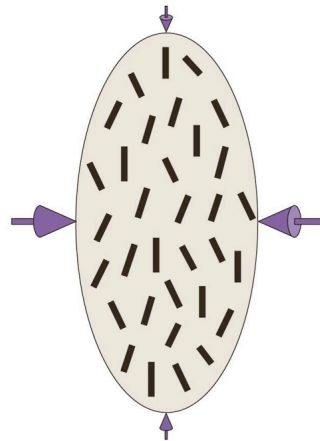
THE MINERALS FOUND IN A METAMORPHIC ROCK CAN INDICATE....

1. pressure rock was subjected to
2. heat rock was subject to
3. the type of parent rock
4. **1, 2 and 3 above**
5. none of the above

22

THE TYPE OF STRESS THIS DIAGRAM INDICATES IS...

1. uniform pressure
2. **differential stress**
3. shear stress
4. impossible to tell



23